



# Altra-Air Sailfin

## Altra-Air Sailfin HVLS Ceiling Fans

Airfoils don't change....That is unless you work with Envira-North Systems. Since 2003, we've continually searched, tested and modified airfoils to maximize their efficiency – solely for the purpose of moving large volumes of air at low speeds. Here's what we've done:



Increased  
Air Speeds



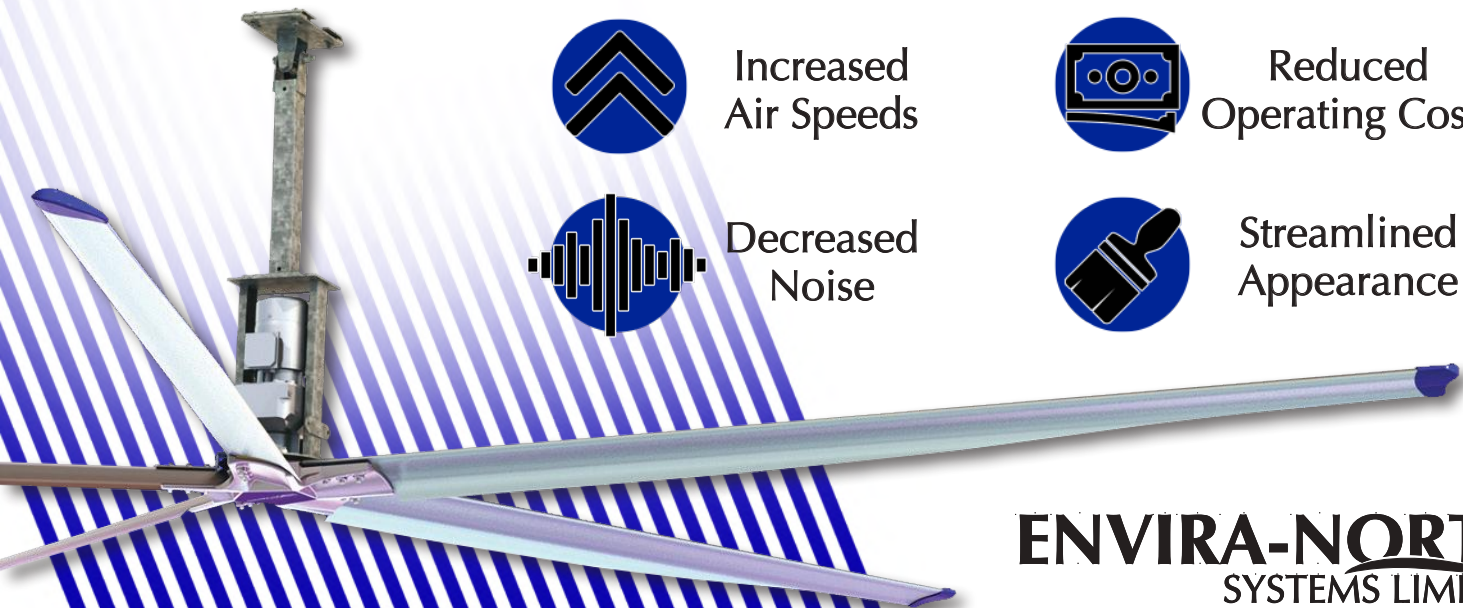
Reduced  
Operating Costs



Decreased  
Noise



Streamlined  
Appearance



**ENVIRA-NORTH**  
SYSTEMS LIMITED

(519) 527-2198  
[www.enviranorth.com](http://www.enviranorth.com)

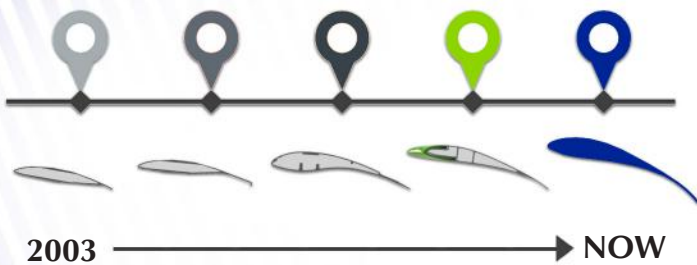


## Performance & Benefits

(Tested to AMCA Standards)

- 6MPH Breeze
- Maximum 5.7A Draw
- 264 CFM/Watt
- Minimal 2.5" Blade Flex
- 53 RPM at Full Speed
- Up to 23° Angle of Attack
- Less Torque

## The Evolution to Sailfin

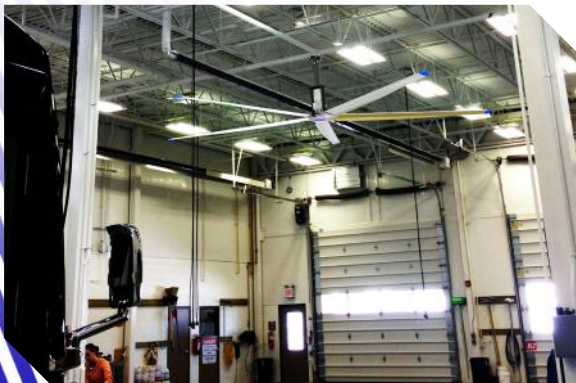


The Ultra-Air Sailfin variable pitch, modulated trailing-edge airfoil removes the inefficiencies created by differentiating rotational HVLS Fan speeds.

Simply put - A faster tip speed requires less surface area and less angle of attack to produce airflow. While a slower hub speed requires more surface area and more angle of attack to produce airflow. The evenly spread deflection creates less disruption in the trailing air stream, producing cleaner air for the following airfoil, less blade flex in the alternating blade assembly and lowers unwanted (and expensive) operating load.

All this adds up to greater air speed velocities, with less noise created and less money spent operating.

Not to mention one sleek looking design.



**ENVIRA-NORTH**  
SYSTEMS LIMITED