

# M2 BASIC HIGH SPEED DOORS

CRASH FORGIVING & AUTOMATICALLY RE-INSERTING



M2 BASIC  
HIGH SPEED DOORS

Designed for interior and exterior use.

*DYNACO is a unique "patented" concept offering:  
The safest, fastest, best sealing doors, with the  
lowest maintenance cost in the industry.*



# M2 BASIC Designed for up to 100 cycles per day in an interior or exterior environment .

Resists to and operates under pressures up to:

Maximum dimensions: W 12' x H12'

Width (ft.)	UP TO 7'	8'	9'	10'	11'	12'
Pressure (lbs./sq.ft.)	23.89	20.90	18.58	16.72	15.20	13.93
Wind speed* (mph)	95	90	85	80	75	72.5

\*Wind speed is indicative, not including any multiplication coefficients taking into account the configuration of the building.

## DESCRIPTION

**STANDARD OPERATING SPEED:** 24"/sec.

**OPERATING TYPE:** gear driven, push-pull movement.

**SIDE GUIDE** made of structural channels of 3 5/16"x2"x1/8" in galvanized steel.

**INNER SIDE GUIDE** in polyethylene (PE-UHMW 1000); outer section 1/2" x 13/16", fixed at the base of the structural channels with springs. This means that the door curtain is stretched between its side guides.

**DRUM** in steel, diameter 4" x 0.078", shafts in steel.

**DOOR CURTAIN** in very resistant PVC (27 oz/sq. yd). Available in different colors and provided with side sealing zippers; soft bottom edge design.

**MOTOR:** 1/2 HP-60 HZ continuous industrial motor. (HP may vary with door size)

**MOTOR COVER:** optional.

**CONTROL CIRCUIT:** electronic control board with 5V logic. Options included: B2, E2 wiring, timer to close, mid-stop, delay on reverse, maximum run timer.

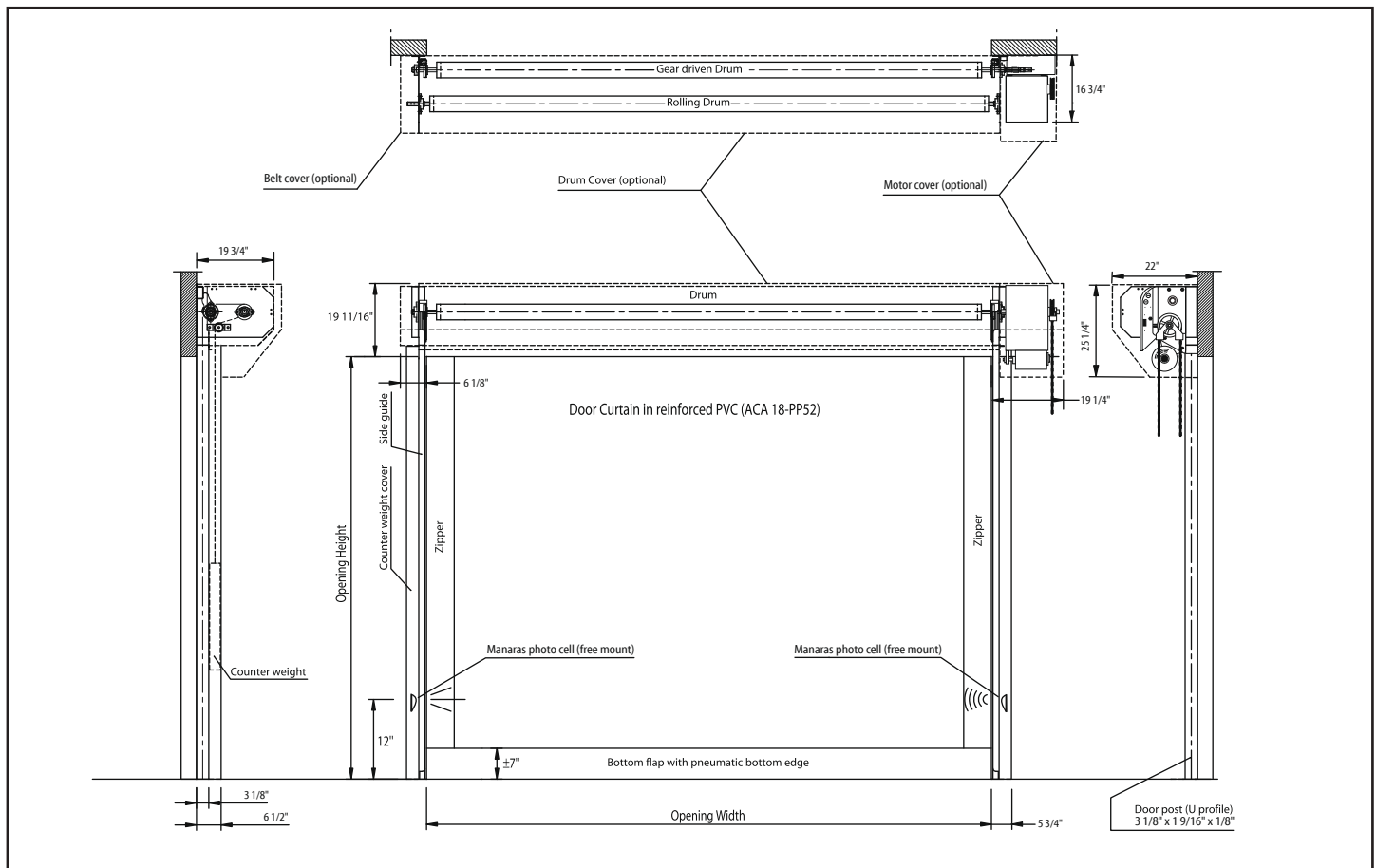
**OPERATOR** manufactured by MANARAS: Opera-H-Jackshaft Operator with industrial duty

motor for up to 25 cycles/hour or 100 cycles/day. Electronic control board supplied with floor level disconnect for manual operation.

**DETECTORS:** An infrared photocell, detecting the presence of a pedestrian or a vehicle, immediately opens the door and keeps it open as long as the presence is detected. Height of the photocell: 12" from the floor (optionally up to maximum 24" upon request). A bottom edge detector opens the door when it hits an obstacle during the closing cycle. This detector is positioned in the bottom part of the curtain.

**POWER SUPPLY:** Standard: 115 VAC. Optional single phase 208-230 VAC, three phase 208 VAC, three phase 460 VAC, three phase 575 VAC. Frequency: 60 Hz. Circuit protection to be provided by the customer: 8A for 115/1/60, 4A for 230/1/60, 2.1A for 208/3/60, 1A for 460/3/60, 0.8A for 575/3/60.

**SPACE REQUIREMENTS:** All indicated dimensions are net: the space necessary for mounting and maintenance has to be provided. Reduced dimensions: upon request.



Within the framework of its policy of continuous development of its products, DYNACO reserves the right to modify the characteristics of its products and parts without prior notice.



**DYNACO. THE SAFEST CHOICE**

Call DYNACO for additional information • P: 1-800-459-1930 • F: 1-800-459-1960 • Email: [dynaco@dynacodoor.us](mailto:dynaco@dynacodoor.us) • [www.dynacodoor.us](http://www.dynacodoor.us)