

ENTRE//MATIC



Dynaco M2 Freezer

Push-Pull
gear driven technology



interior door



Dynaco M2 Freezer

Engineered specifically for freezer applications, the Dynaco M2 Freezer door provides the industry's fastest return on investment and lowest life cycle cost. This energy saving door system minimizes convection, conduction and infiltration energy loss. Faster cycle speeds (up and down), an insulated curtain (optional) and tighter seals around the perimeter reduce loss of cold air. All of this is accomplished without compromising speed or safety.

■ FAST SPEED:

Significantly reduces energy costs due to lost temperature control; dramatically improves productivity and safety.

■ INSULATION:

An insulated door curtain consisting of two layers of PVC filled with insulating material can be specified to reduce convection.

■ TIGHT SEAL:

On all four sides of the opening minimizes infiltration, inhibits water, dust, pests and other contaminants.

■ AIR CURTAIN:

The addition of an optional air blower can reduce condensation and frost buildup on the door panel, and can be set to blow ambient or heated air.

■ DOOR CONTROLS:

Variable frequency drive provides smooth operation, rated to cycle 6,000 times per day and lasting millions of cycles. NEMA 4 rated enclosure with LCD screen, rotary disconnect, push button, and E-stop button.

■ WARRANTY:

5 year unlimited cycle warranty on the motor, and the curtain material (against manufacturers defects); one year warranty on the door.

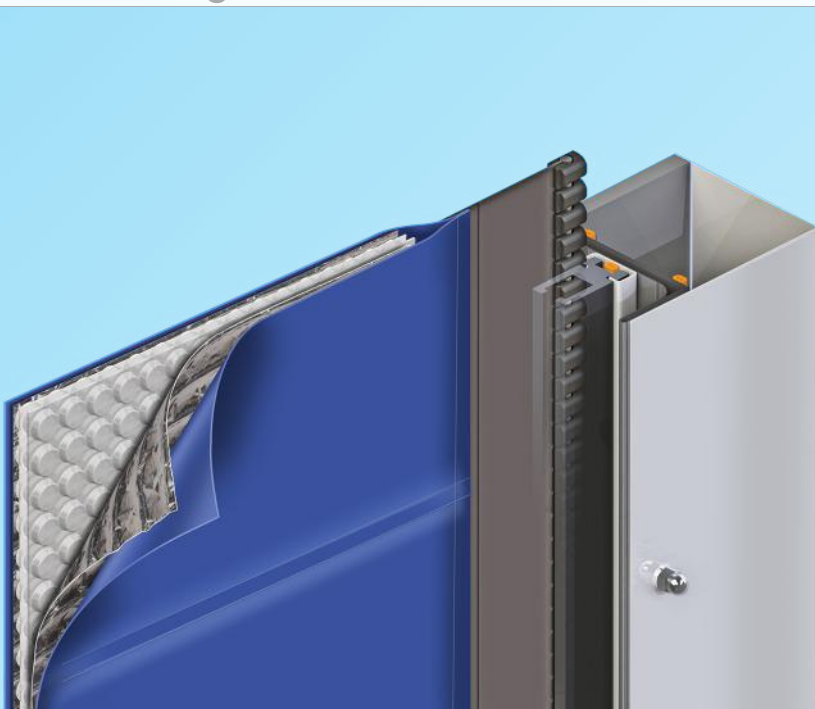
■ COST OF OWNERSHIP:

Efficiently engineered to require fewer and less expensive components.

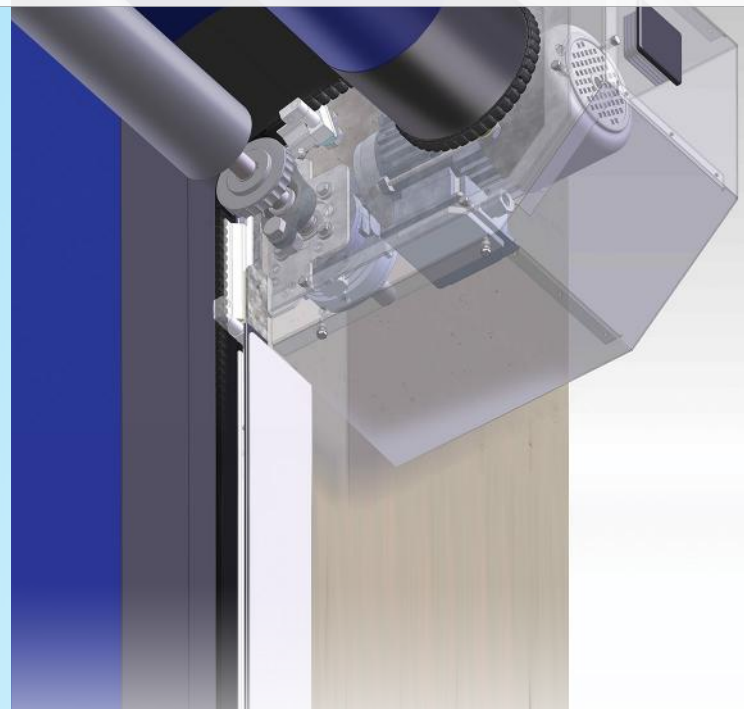
■ SAFETY ENGINEERED:

Safety Is No Accident at Entrematic and it is not an option either. Our patented truly soft bottom edge and automatic self reinserting system has provided an exemplary product safety record.

Insulating Curtain



Push-Pull Drive



Push-Pull

gear driven technology



interior door

CHARACTERISTICS

Door Specifications	Standard	Insulated Curtain
Min. Dimensions	Width 3'0" x Height 7'0" (21 sq. ft.)	
Max. Dimensions	Width 10'0" x Height 14'0" (140 sq. ft.)	
Opening Speed	96"/sec. standard	up to 85"/second*
Closing Speed	48"/sec. standard	up to 70"/second*
Perimeter Seal	.046 air gap	
Air Curtain	3,300 CFMS (option/retrofitable)	
Curtain Material	27 oz./sq.yd. fiber reinforced PVC	Two-ply PVC with insulation
Vision Panels	24" square, 15" banner	10" banner
Color Choices	Yellow RAL1003 Orange RAL2004 Red RAL3000 Blue RAL5002 Brown RAL8017 Green RAL6005 Grey RAL7038 White RAL9010 Black RAL9005	



CHARACTERISTICS

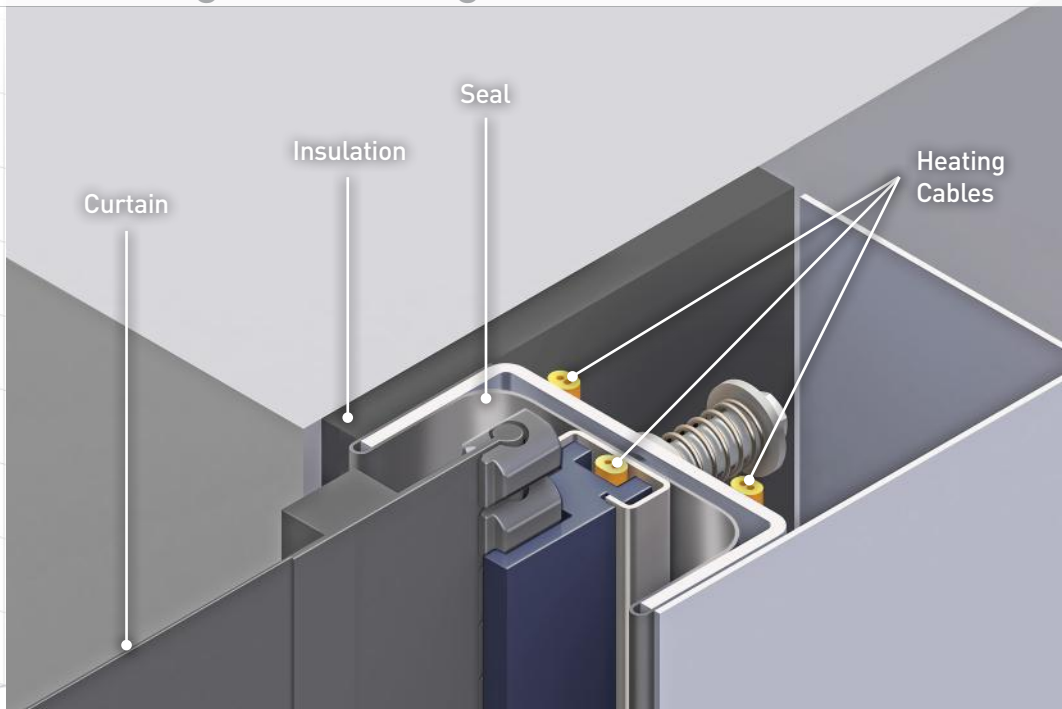
Door Specifications	
Power	Single Phase: 208 - 230 VAC Three phase: 208-230 VAC; 460 VAC; 575 VAC
Control Box	Includes Dynalogix 4000 solid state control board, variable frequency drive, absolute encoder, LCD screen, dynamic braking, fused rotary disconnect, E-stop button, open/close push button. NEMA 4 rated
Motor	Direct drive, IP65 rated with dynamic braking
Detectors	Wireless Detection Device in curtain bottom; photo sensors in side guides
Activation	Two IS40 motion/presence detectors; One remote control programmer; additional alternative devices optional

* dependant on size

Air Curtain Option

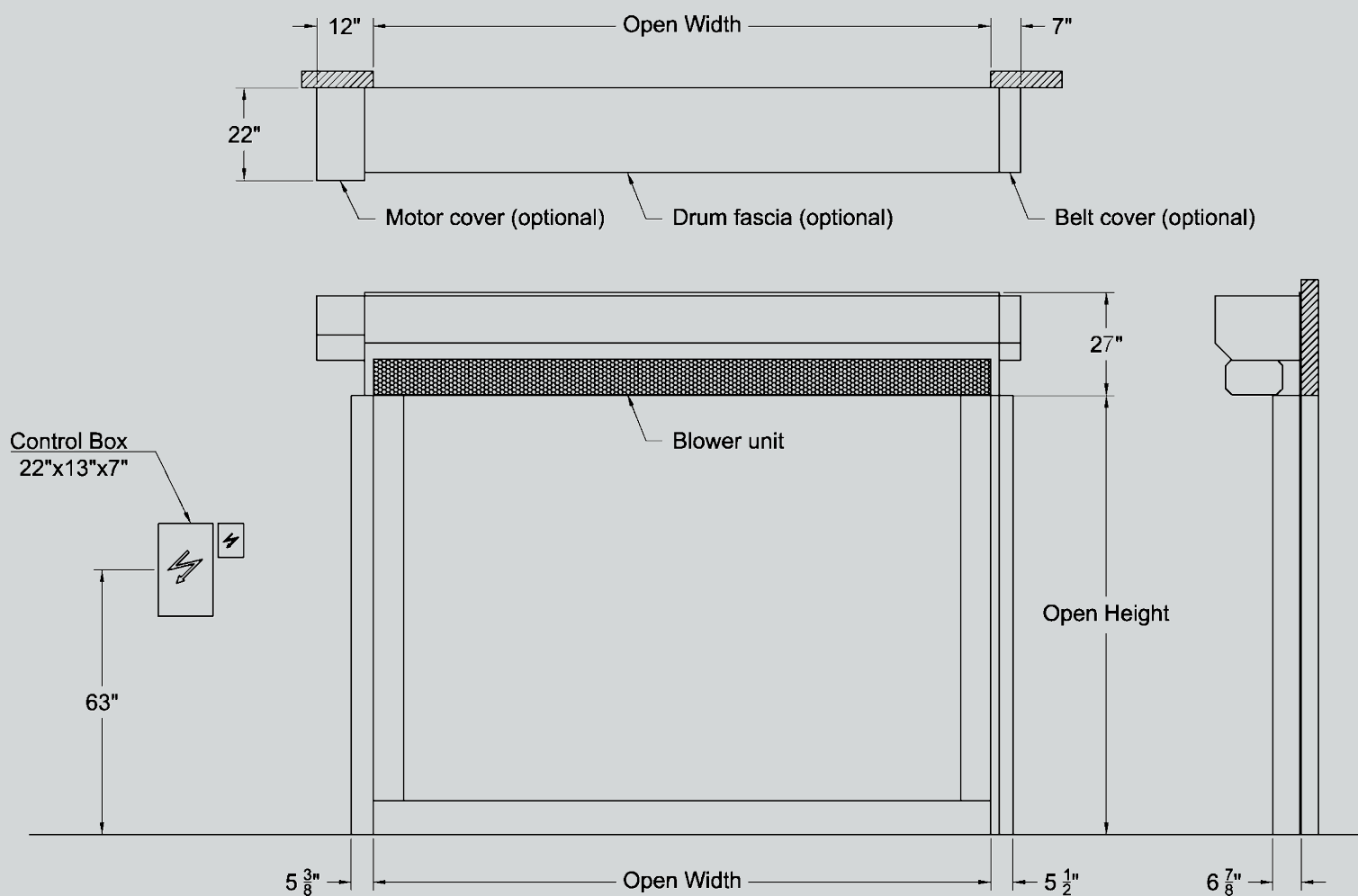


Sealing and Heating Elements





Dimensions and installation requirements for Dynaco M2 Freezer High Performance Door



All indicated dimensions are net: the space necessary for mounting and maintenance has to be provided.
REMARK: based on the risk analysis of the environment, extra push buttons, detectors and covers might be required.

Entrematic offers a comprehensive range of products for industrial, commercial, institutional and residential applications, including sectional doors, loading dock equipment, high-performance doors, residential garage doors, pedestrian door automation and openers. Built on nearly 200 years of accumulated expertise, Entrematic is the preferred partner of distributors and the number one choice of end user customers, providing innovative products, technical expertise and a portfolio of industry-leading brands including Amarr, Kelley, Serco, Dynaco and Ditec. Entrematic, Amarr, Kelly, Serco, Normstahl, Dynaco, Ditec and EM, as words and logotypes, are examples of trademarks owned by Entrematic Group AB or companies within the Entrematic Group.

The Dynaco products are protected by worldwide registered patents. As part of its policy of continuous product development, Entrematic reserves the right to change the characteristics of its products or components without prior notice.
Disclaimers: For a correct use of our products, please refer to our manual. Everything that is mentioned in this brochure is only valid under the terms of use in the user manual and on condition that the door was properly installed and maintained and has not undergone abuse nor neglect.

© Entrematic Group AB, 2017

PS-M2F-USA-V2.6
Entrematic
935 Campus Dr. Mundelein, IL 60060 USA
P: 1-800-459-1930; P: 1-847-562-4910
F: 1-800-459-1960
E: dynaco@dynacodoor.us

www.dynacodoor.us

ENTRE/MATIC